

SONATE DA CAMERA A TRE

Violoncello

Sonata I

Antonio Vivaldi, Op. 1

PRELUDIO

Grave

Musical notation for the Preludio section, measures 1-14. The notation is in bass clef with a key signature of one flat (B-flat) and a common time signature (C). The music begins with a half note G2, followed by quarter notes A2, B-flat2, and C3. The melody continues with quarter notes D3, E3, F3, and G3. The piece concludes with a half note G3. Dynamic markings include *piano* at measure 14 and *forte* at measure 14.

ALLEMANDA

Allegro

Musical notation for the Allemanda section, measures 1-25. The notation is in bass clef with a key signature of one flat (B-flat) and a common time signature (C). The piece starts with a half note G2, followed by quarter notes A2, B-flat2, and C3. The melody continues with quarter notes D3, E3, F3, and G3. The piece concludes with a half note G3. Dynamic markings include *piano* at measure 25 and *forte* at measure 25. There are also markings for a second ending (2) at measures 6, 11, and 19.

Edwin F. Kalmus
Publisher of music
New York, N.Y.

Violoncello

Adagio

15 *piano*

CAPRICCIO
Allegro

ff
piano *forte*

GAVOTTA
Allegro

Sonata II

Grave

piano

CORRENTE
Allegro

Violoncello

Musical score for the Corrente section, Violoncello part. It consists of five staves of music in bass clef, 3/4 time, and D major. The first staff starts with a treble clef and a key signature change to D major. Measure numbers 12, 28, 31, and 42 are indicated at the beginning of their respective staves. The piece concludes with a double bar line and repeat dots. Dynamics include *piano* and *forte*.

GIGA
Allegro

Musical score for the Giga section, Violoncello part. It consists of five staves of music in bass clef, 12/8 time, and D major. Measure numbers 6, 12, 16, 22, and 28 are indicated at the beginning of their respective staves. The piece concludes with a double bar line and repeat dots. The dynamic *piano* is marked.

GAVOTTA
Allegro

Musical score for the Gavotta section, Violoncello part. It consists of two staves of music in bass clef, 4/4 time, and D major. Measure numbers 1 and 28 are indicated at the beginning of their respective staves. The piece concludes with a double bar line and repeat dots. The dynamic *piano* is marked.

Sonata III

Adagio

Musical notation for the Adagio section, measures 1-9. The music is written in bass clef with a common time signature (C). It features a steady eighth-note accompaniment in the left hand and a more melodic line in the right hand.

ALLEMANDA

Allegro

Viol. II

Musical notation for the Allemanda section, measures 10-36. The music is written in bass clef with a common time signature (C). It features a steady eighth-note accompaniment in the left hand and a more melodic line in the right hand. The section is marked with first and second endings. A *piano* dynamic marking is present in measure 10. The section concludes with a repeat sign in measure 36.

Adagio

Musical notation for the final Adagio section, measures 37-40. The music is written in bass clef with a common time signature (C). It features a steady eighth-note accompaniment in the left hand and a more melodic line in the right hand.

SARABANDA

Allegro

Viol. II

4

14

28

37

piano

Detailed description: This block contains the musical notation for the Sarabanda movement, measures 4 through 37. It is written for Violoncello (Viol. II) in a 4/8 time signature. The music is in a key with one sharp (F#). The tempo is marked 'Allegro'. The notation consists of four staves of music. Measure 4 is the starting point. Measure 14 contains a first ending bracket. Measure 28 is the end of a phrase. Measure 37 is the final measure of this section, marked 'piano'.

Sonata IV

Largo

11

21

32

piano *forte*

Detailed description: This block contains the musical notation for Sonata IV, measures 1 through 32. It is written for Violoncello in a 3/4 time signature. The music is in a key with one sharp (F#). The tempo is marked 'Largo' for the first two staves and 'Allegro' for the last two staves. The notation consists of four staves of music. Measure 11 is the start of a new phrase. Measure 21 is the start of another phrase. Measure 32 is the final measure of this section, marked 'piano' and 'forte'.

ALLEMANDA

Allegro

5

10

15

20

25

SARABANDA

Largo

5

GIGA

Allegro

6

11

16

21

Sonata V

PRELUDIO

Largo

Musical notation for the Preludio section, measures 1-11. The music is written in bass clef with a key signature of one flat (B-flat) and a common time signature (C). The tempo is marked 'Largo'. The notation consists of a single melodic line with various rhythmic values including eighth and sixteenth notes, and rests.

ALLEMANDA

Presto

Musical notation for the Allemanda section, measures 12-17. The music is written in bass clef with a key signature of one flat (B-flat) and a common time signature (C). The tempo is marked 'Presto'. The notation features a single melodic line with eighth and sixteenth notes, and rests. A 'piano' dynamic marking is present at the end of the section.

CORRENTE

Allegro

Viol. II

Musical notation for the Corrente section, measures 18-47. The music is written in bass clef with a key signature of one flat (B-flat) and a 3/4 time signature. The tempo is marked 'Allegro'. The notation includes a double bar line with a repeat sign at measure 21. A 'piano' dynamic marking is present at the end of the section. The notation consists of a single melodic line with eighth and sixteenth notes, and rests.

Violoncello

GAVOTTA

Presto

Musical score for Gavotta, Presto, Cello part. The score consists of three staves of music in bass clef, 3/4 time, and B-flat major. The first staff starts with a treble clef and a common time signature, then changes to bass clef and 3/4 time. The second staff begins with a measure rest of 5 measures. The third staff includes first and second endings.

Sonata VI

PRELUDIO

Grave

Musical score for Sonata VI, Preludio, Grave, Cello part. The score consists of three staves of music in bass clef, 3/4 time, and D major. The first staff starts with a treble clef and a common time signature, then changes to bass clef and 3/4 time. The second staff begins with a measure rest of 5 measures. The third staff includes a fermata at the end.

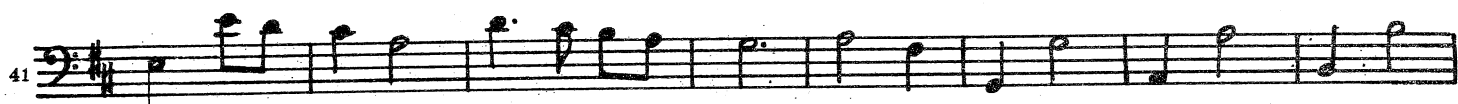
CORRENTE

Allegro

Viol. I

Musical score for Sonata VI, Corrente, Allegro, Violin I part. The score consists of four staves of music in bass clef, 3/4 time, and D major. The first staff starts with a treble clef and a 3/4 time signature, then changes to bass clef and 3/4 time. The second staff begins with a measure rest of 9 measures. The third staff includes a measure rest of 19 measures and the word 'piano'. The fourth staff begins with a measure rest of 31 measures.

Violoncello



Adagio



ALLEMANDA
Allegro



SONATE DA CAMERA A TRE

Violoncello

Sonata VII

Antonio Vivaldi, Op. 1

PRELUDIO

Largo

Musical score for the Preludio of Sonata VII, Violoncello part. The score consists of four staves of music. The first staff begins with a treble clef, a key signature of two flats (B-flat and E-flat), and a common time signature. The tempo is marked 'Largo'. The music features a series of eighth-note patterns with slurs. The second staff is marked with a '3' at the beginning. The third staff is marked with a '6' at the beginning. The fourth staff is marked with a '9' at the beginning and ends with a fermata. The word 'piano' is written below the fourth staff.

ALLEMANDA

Allegro

Musical score for the Allemanda of Sonata VII, Violoncello part. The score consists of ten staves of music. The first staff begins with a treble clef, a key signature of two flats (B-flat and E-flat), and a common time signature. The tempo is marked 'Allegro'. The music features a series of eighth-note patterns with slurs. The second staff is marked with a '6' at the beginning. The third staff is marked with a '12' at the beginning. The fourth staff is marked with a '17' at the beginning. The fifth staff is marked with a '21' at the beginning. The sixth staff is marked with a '25' at the beginning. The seventh staff is marked with a '30' at the beginning and ends with a fermata. The word 'piano' is written below the seventh staff.

Violoncello

SARABANDA

Andante

Musical score for Sarabanda, Andante, Cello part. The score consists of five staves of music in bass clef, 3/4 time, and B-flat major. The first staff starts with a treble clef and a 3/4 time signature. The second staff has a measure rest of 7 measures. The third staff has a measure rest of 14 measures. The fourth staff has a measure rest of 20 measures. The fifth staff has a measure rest of 26 measures. The piece ends with a double bar line and repeat signs.

piano

GIGA

Presto

Musical score for Giga, Presto, Cello part. The score consists of three staves of music in bass clef, 3/4 time, and B-flat major. The first staff starts with a treble clef and a 3/4 time signature. The second staff has a measure rest of 6 measures. The third staff has a measure rest of 12 measures. The piece ends with a double bar line and repeat signs, with first and second endings marked '1.' and '2.'.

piano

Sonata VIII

PRELUDIO

Largo

Musical score for Sonata VIII, Preludio, Largo, Cello part. The score consists of four staves of music in bass clef, 3/4 time, and B-flat major. The first staff starts with a treble clef and a 3/4 time signature. The second staff has a measure rest of 6 measures. The third staff has a measure rest of 11 measures. The fourth staff has a measure rest of 16 measures. The piece ends with a double bar line and repeat signs.

piano

Violoncello

CORRENTE
Allegro

Musical score for the 'CORRENTE' section, measures 1-58. The music is in bass clef with a key signature of one flat and a 3/4 time signature. It features a series of eighth and sixteenth notes with some rests and dynamic markings. The word 'piano' appears twice, once at measure 17 and once at measure 58.

Grave

Musical score for the 'Grave' section, measures 59-12. The music is in bass clef with a key signature of one flat and a 3/4 time signature. It features a series of sixteenth notes with some rests and dynamic markings. The word 'piano' appears at measure 12.

GIGA
Allegro

Violoncello

1 Viol. II

piano

PRELUDIO
Allegro

Sonata IX

1 1

Adagio

ALLEMANDA
Allegro

Violoncello

Viol. II

Musical score for the Allemanda section, measures 1-80. The score is written in bass clef with a key signature of two sharps (F# and C#) and a common time signature (C). The tempo is marked 'Allegro'. The notation includes various rhythmic values such as eighth and sixteenth notes, rests, and dynamic markings like 'piano'.

CORRENTE
Presto

piano

Musical score for the Corrente section, measures 81-100. The score is written in bass clef with a key signature of two sharps (F# and C#) and a 3/4 time signature. The tempo is marked 'Presto'. The notation includes various rhythmic values such as eighth and sixteenth notes, rests, and dynamic markings like 'piano' and 'forte'.

PRELUDIO

Sonata X

Adagio

Musical notation for the first part of the Preludio, measures 1-19. The music is in a 3/2 time signature with a key signature of two flats. It begins with a half note G2, followed by a series of eighth and quarter notes. Measure numbers 10 and 20 are indicated on the left.

ALLEMANDA

Allegro

piano

Musical notation for the first part of the Allemanda, measures 1-35. The music is in a 6/8 time signature with a key signature of two flats. It features a rhythmic pattern of eighth and sixteenth notes. Measure numbers 7, 15, 21, 29, and 36 are indicated on the left. The dynamic marking *piano* appears at measures 15 and 36, and *forte* appears at measure 36.

GAVOTTA

Presto

Musical notation for the first part of the Gavotta, measures 1-21. The music is in a 6/8 time signature with a key signature of two flats. It features a rhythmic pattern of eighth and sixteenth notes. Measure numbers 7, 15, and 22 are indicated on the left.

Violoncello

29 *piano*
35 *forte* *piano*

PRELUDIO
Andante

Sonata XI

6
12
20 *piano forte*

CORRENTE
Allegro

10
22
34
46
58
69 *piano*

Violoncello

GIGA
Allegro

Viol. I

Musical notation for the first staff of the Giga movement, featuring a 3/8 time signature and a treble clef.

Musical notation for the second staff of the Giga movement, including the dynamic markings *piano* and *forte*.

Musical notation for the third staff of the Giga movement, starting with a measure rest of 2.

Musical notation for the fourth staff of the Giga movement.

GAVOTTA
Presto

Musical notation for the first staff of the Gavotta movement, in 6/8 time.

Musical notation for the second staff of the Gavotta movement.

Musical notation for the third staff of the Gavotta movement, including the dynamic marking *piano*.

Musical notation for the fourth staff of the Gavotta movement, including the dynamic marking *forte*.

Musical notation for the fifth staff of the Gavotta movement, including the dynamic marking *piano*.

Sonata XII
Folia

1. Adagio

Musical notation for the first staff of the first movement of Sonata XII, in 3/4 time.

Musical notation for the second staff of the first movement of Sonata XII, including the dynamic marking *piano*.

Violoncello

2. Andante

17
25

Detailed description: This block contains two staves of music. The first staff starts at measure 17 and the second at measure 25. The tempo is marked 'Andante'. The music consists of eighth and sixteenth notes with various rests and accidentals.

3. Allegro

33

Detailed description: This block contains one staff of music starting at measure 33. The tempo is marked 'Allegro'. The music features a more rhythmic pattern with eighth and sixteenth notes.

4.

44
54

Detailed description: This block contains two staves of music. The first staff starts at measure 44 and the second at measure 54. The tempo is not explicitly marked but appears to be 'Allegro'. The music continues with rhythmic eighth and sixteenth notes.

5.

65
70
75

Detailed description: This block contains three staves of music. The first staff starts at measure 65, the second at measure 70, and the third at measure 75. The tempo is not explicitly marked. The music continues with rhythmic eighth and sixteenth notes.

6.

81
84
88
92

Detailed description: This block contains four staves of music. The first staff starts at measure 81, the second at measure 84, the third at measure 88, and the fourth at measure 92. The tempo is not explicitly marked. The music continues with rhythmic eighth and sixteenth notes.

7.

97

104

Detailed description: This block contains two staves of music. The first staff starts at measure 97 and ends at measure 104. The second staff continues from measure 104. The music is in a 3/4 time signature with a key signature of one flat (B-flat). It features a melodic line with eighth and sixteenth notes, and a bass line with quarter and eighth notes. The piece concludes with a fermata over the final note.

8.

113

121

Detailed description: This block contains two staves of music. The first staff starts at measure 113 and ends at measure 121. The second staff continues from measure 121. The music is in a 3/4 time signature with a key signature of one flat. It features a melodic line with quarter and eighth notes, and a bass line with quarter notes. The piece concludes with a fermata over the final note.

9. Adagio

129

134

139

Detailed description: This block contains three staves of music. The first staff starts at measure 129 and ends at measure 134. The second staff continues from measure 134 and ends at measure 139. The third staff continues from measure 139. The music is in a 3/4 time signature with a key signature of one flat. It features a melodic line with eighth and sixteenth notes, and a bass line with quarter notes. The piece concludes with a fermata over the final note.

10. Vivace

145

153

Detailed description: This block contains two staves of music. The first staff starts at measure 145 and ends at measure 153. The second staff continues from measure 153. The music is in a 3/4 time signature with a key signature of one flat. It features a melodic line with quarter notes and rests, and a bass line with quarter notes. The piece concludes with a fermata over the final note.

11. Allegro

161

166

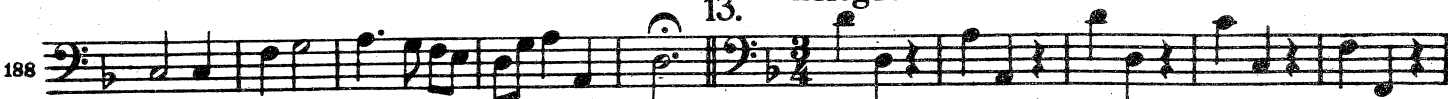
171

Detailed description: This block contains three staves of music. The first staff starts at measure 161 and ends at measure 166. The second staff continues from measure 166 and ends at measure 171. The third staff continues from measure 171. The music is in a 3/4 time signature with a key signature of one flat. It features a melodic line with eighth and sixteenth notes, and a bass line with quarter notes. The piece concludes with a fermata over the final note.

12. Larghetto



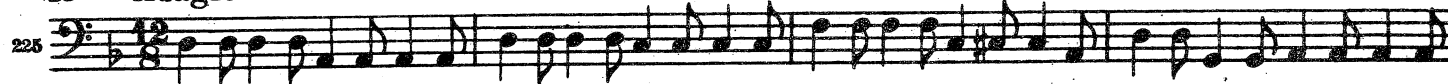
13. Allegro



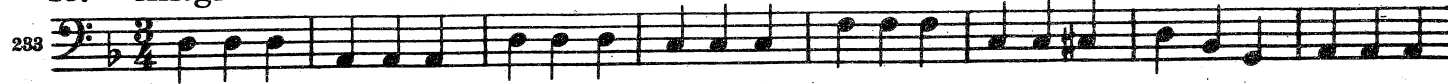
14.



15. Adagio



16. Allegro



17. 249

252

256

260

18. 265

273

19. 281

289

20. 297

301

306

313

317

piano